

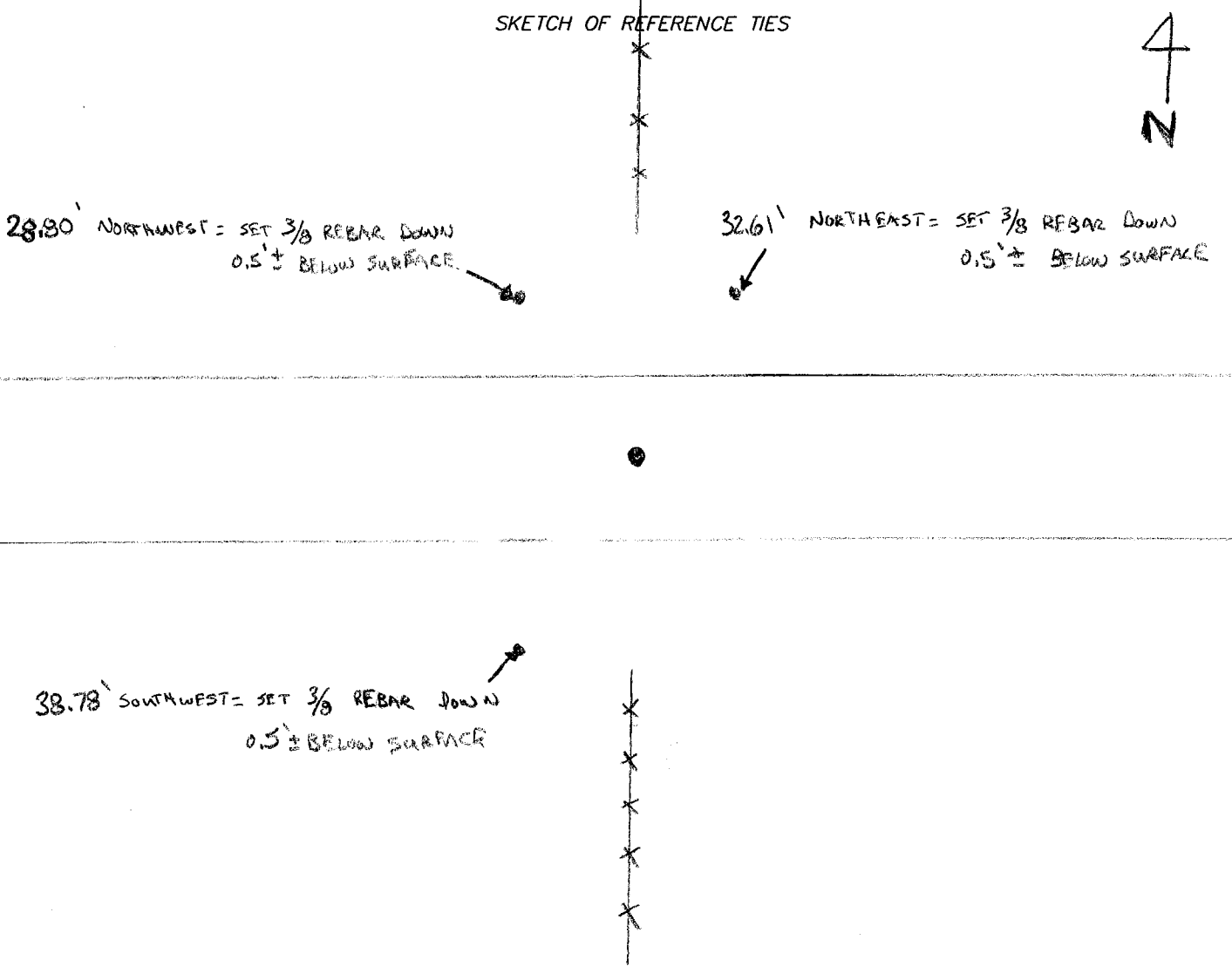
# CERTIFICATE OF LOCATION OF GOVERNMENT CORNER

North Quarter Corner of Section 17, Township 107, Range 43, \_\_\_\_\_ P.M.  
 STATE OF MINNESOTA, County of MURRAY

At the corner location shown on the sketch:

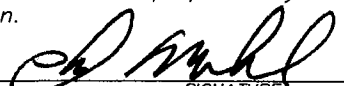
- On 6/29/07 found a CAPPED IRON DOWN 0.3' BELOW SURFACE CAP # WAS 4260  
DATE
- left monument as found,     
  lowered monument,     
  removed monument (explain)
- On \_\_\_\_\_ placed a \_\_\_\_\_  
DATE

### SKETCH OF REFERENCE TIES



Statement of evidence relative to this corner location is on back of page.

I hereby certify that this document and the data contained herein was prepared by me or under my direct supervision.

  
SIGNATURE

Registration No. 40853

- Land Surveyor,     
  Professional Engineer  
 County Surveyor,     
  County Engineer

OFFICE OF THE COUNTY RECORDER  
 County of \_\_\_\_\_

I hereby certify that this document was filed in the Co. Recorders office at \_\_\_\_\_ .M. on the \_\_\_\_\_ day of \_\_\_\_\_ A.D., 20\_\_\_\_

County Recorder \_\_\_\_\_

By \_\_\_\_\_, Deputy

DOCUMENT NO. \_\_\_\_\_